

# USER MANUAL

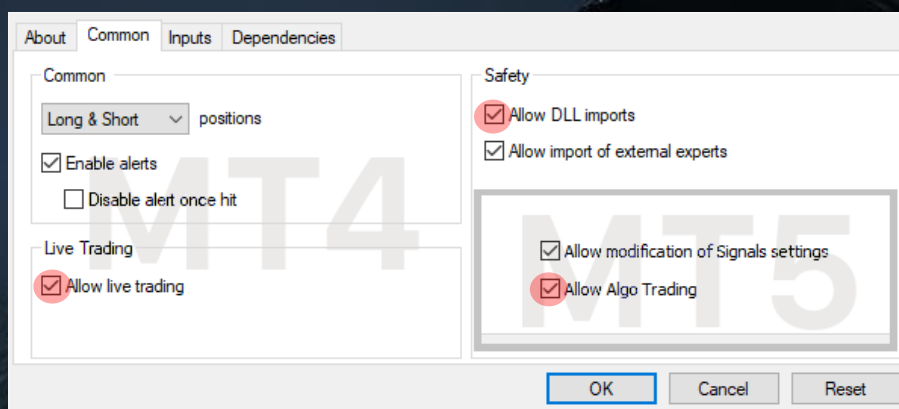
## HOW TO INSTALL THE EA:

Open your MT4/MT5 terminal. Go to File → Open Data Folder → MQL4/MQL5 → Experts. Copy and paste Night Forex Bot.ex4 file (if you use MT4), or Night Forex Bot.ex5 file (if you use MT5) from the archive you received to the mentioned folder.

Then go to File → Open Data Folder → MQL4/MQL5 → Libraries. Copy and paste ForexStore\_1.4.dll file (if you use MT4), or ForexStore\_MT5\_1.4.dll file (if you use MT5) from the archive to the mentioned folder. Reboot your MT4/MT5 terminal.

Open a chart (or charts) with the supported currency pair(s) (USDCAD, AUDUSD and USDJPY) with ANY timeframe, drag and drop Night Forex Bot to the open chart(s). If you want the EA to trade on all the supported currency pairs, you need to open 3 different charts.

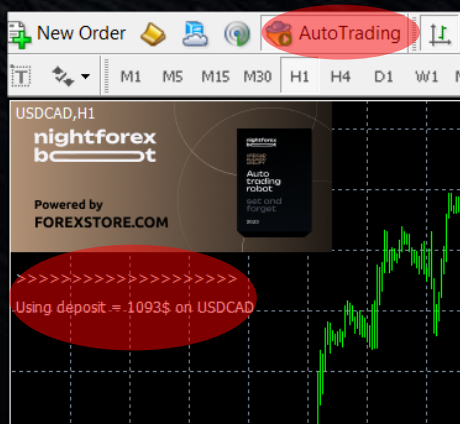
Choose Common tab and check the boxes “Allow live trading” with “Allow DLL imports” (if you use MT4). In case of using MT5 you need to check the boxes “Allow Algo Trading” in the Common tab and “Allow DLL imports” in the Dependencies tab.



Choose Inputs tab and specify your desired risk for each currency pair, if needed (more information about all the parameters you can find below), or keep the recommended default settings. We recommend to set the risk up to 35% (RiskLimit=35) for trading on one currency pair, up to 30% risk (RiskLimit=30) for trading on two currency pairs, and up to 25% risk (RiskLimit=25) for trading on three currency pairs together.

Minimum deposits for the EA are: USDCAD - \$600, AUDUSD - \$500, USDJPY - \$500 for 0.01 lot. You should have at least \$1000 to be able to trade on all three supported currency pairs together.

Make sure that AutoTrading is enabled and the symbol “>” is running:



**NOW YOU ARE READY TO START!**

## HERE YOU CAN READ MORE ABOUT ALL THE PARAMETERS OF NIGHT FOREX BOT:

**AutoRisk** – the money management of Night Forex Bot. If “true” the EA will set lot size automatically, based on your deposit and the risk you set. If “false” the EA will use lot size, which you can set manually in StartLot.

**RiskLimit** – a part of your deposit (in percentage) which the EA will use for trading. Doesn't work if AutoRisk is “false”. The minimum deposits which are required for the EA are equal to 100% risk. To be able to trade with a lower risk your deposit should be bigger than the required deposits. For trading with the default 35% risk your deposit should be \$1715 (or more) trading on USDCAD, \$1430 (or more) trading on AUDUSD, and \$1430 (or more) trading on USDJPY. For trading with the recommended 25% risk on all the three currency pairs, your deposit should be \$2400 (or more).

**StartLot** – lot size, which you can set manually. Doesn't work if “AutoRisk” is “true”.

**Drawdown Control** – if “true” the EA works as usual and limits a drawdown. If “false” the EA removes all Stop Losses and stops limiting a drawdown. It helps to wait for a rollback to clients who are willing to take that risk

**Slippage** – slippage, which you can set manually.

**NFA** – if “Yes”, the EA will disable opening of possible opposite trades (no hedge) and apply FIFO rule. If “No”, the EA will trade without NFA limitations. **Hide Stops** will hide SL and TP for all orders, if that is needed, and the EA will close trades in the necessary moments at their Market prices, same as on our account. Please note, despite the fact of enabling NFA option, some brokers may show a FIFO error from time to time, but it is not dangerous for the logic of the EA.

MT5 version of the EA has an additional parameter - **Order\_Filling\_Type**:

**ORDER\_FILLING\_FOK** – an order can be filled only in the specified amount. That is a recommended default mode for a guaranteed proper work of the original strategy.

**ORDER\_FILLING\_IOC** – a trader agrees to execute a deal with the volume maximally available in the market. In case of using this mode, there could be a violation in the strategy of the EA, and we cannot guarantee a proper operation of the system in all kind of situations. Use this mode only if the default FOK mode is forbidden and you are ready to put up with possible deviations in the strategy.

**ORDER\_FILLING\_RETURN** – in case of partial filling an order with remaining volume is not canceled but processed further. In case of using this mode, there could be a violation in the strategy of the EA, and we cannot guarantee a proper operation of the system in all kind of situations. Use this mode only if the default FOK mode is forbidden and you are ready to put up with possible deviations in the strategy.

If you have any questions, please contact us: [support@nightforexbot.com](mailto:support@nightforexbot.com)

